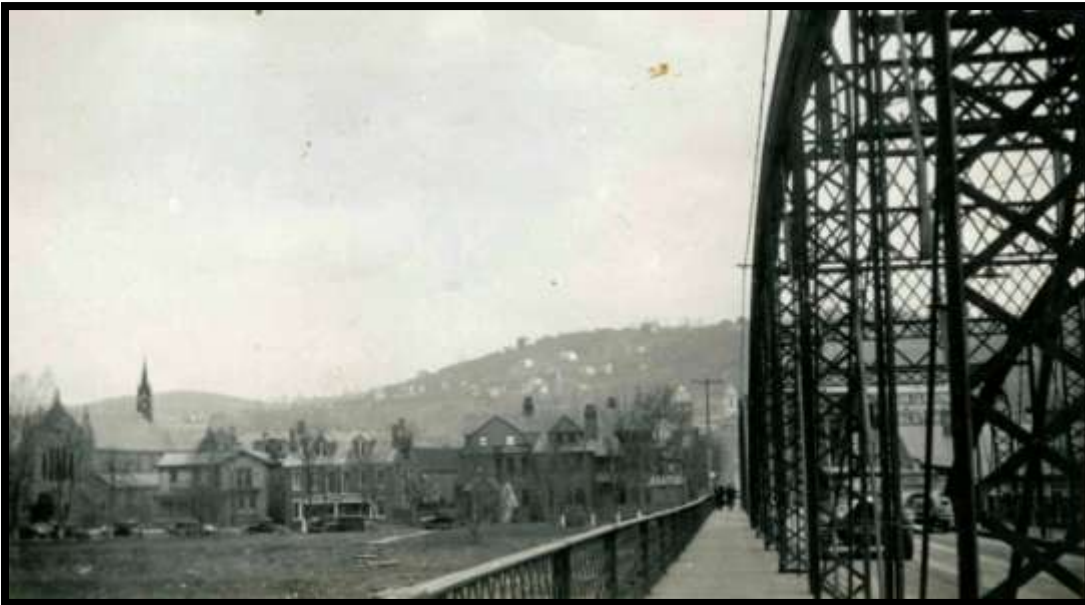


Where was this bridge located?



Whenever my wife and I are on the road I'm always on the lookout for the local antique store to check out pictures or post cards of old bridges. My routine is to make a quick trip through the store looking for a pile of pictures or post cards. I can usually tell by looking at a few if it's worth a careful search of the pile, and I avoid well organized stacks because most treasures have been sold off or traded.

During one of my searches I came across the picture above. The photograph was small and slightly wrinkled, and cost only 35 cents! The bridge appears to be a large two span bowstring truss design which I'm sure has long been replaced. There are several features in the photograph that may provide a clue as to where the bridge was located, and I've enlarged four of them below. A church on the left, a large stone center left, court house center right, and some text on the right. *If you can figure out where this bridge was located, please let me know (www.historicbridgerestoration.com).*

