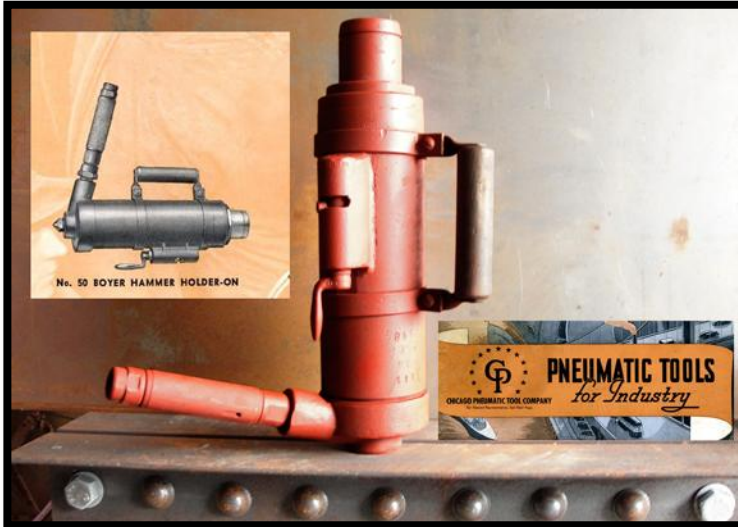
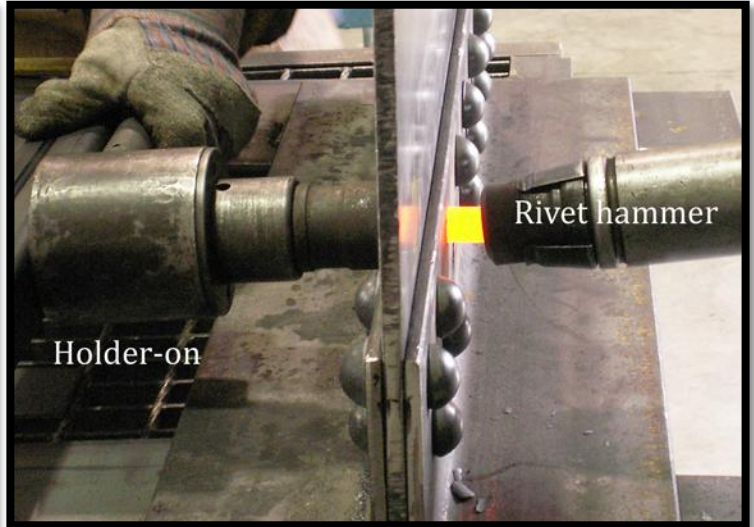


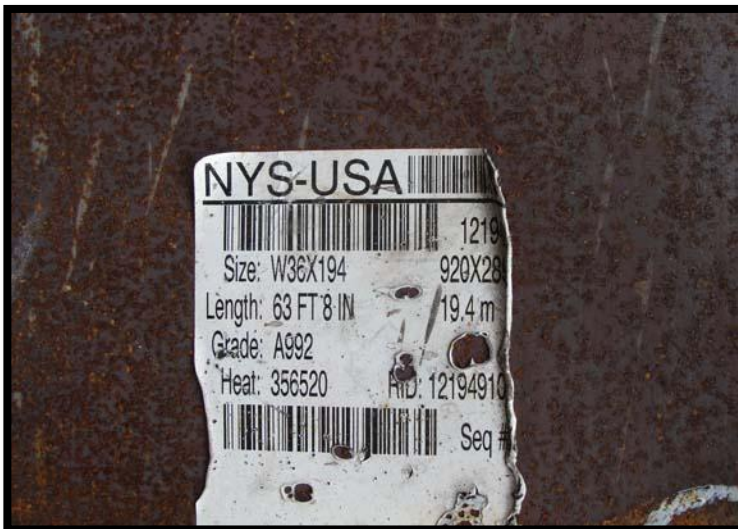
Tour of **Harris Structural Steel Fabrication LLC**, South Plainfield, New Jersey
Vern Mesler and Nan Jackson with General Manager Alan Davisson Sr., May 20, 2011



Holder-on once used by Harris Structural Steel has been donated for use in the Iron & Steel Preservation Conference.



The holder-on is a key part of some rivet operations, to hold a hot rivet firmly in place before forming the second rivet head.



Nucor-Yamato Steel USA at Harris Steel



Nan Jackson, Chair of Iron and Steel Historic Preservation Program Fund of Lansing Community College, Lansing, Michigan



Vern Mesler, Coordinator of Iron and Steel Preservation Conference, with Harris Steel General Manager Alan Davisson Sr.



Davisson with welding equipment and operator



Welding operator preheats large section in preparation for welding



Fabrication of sections for World Trade Center site Transportation Hub



Loading 75-ton section of WTC Transportation Hub at Harris Steel, on a trailer with 64 wheels



more fabricated sections for WTC at Harris Steel



Photo: David W. Dunlap/The New York Times (*image retrieved from <http://www.skyscraperlife.com/mass-transit-transportation/15667-nyc-wtc-santiago-calatravas-path-station-est-compl-2013-a.html>*)



Artistic image of WTC Transportation Hub (*image retrieved from http://english.peopledaily.com.cn/200509/08/eng20050908_207265.html*)